

CHESTERTON®

SELF-ALIGNING STATIONARY

*Used with CHESTERTON Rotary Seal Units
and CHESTERTON 478 Universal Gland*

***AUTOMATICALLY
CORRECTS FOR STUFFING
BOX MISALIGNMENT***

***PROVIDES SUPERIOR
SEAL PERFORMANCE***

The CHESTERTON Self-Aligning Stationary is specifically engineered to operate against CHESTERTON rotating seal units. The application of the Self-Aligning Stationary in conjunction with these rotating units is patented in the USA and in other countries. The flexing face is free to adjust automatically to a right angle from the shaft. Available with 316 Stainless Steel holder and Silicon Carbide or Alumina Ceramic face in shaft sizes 1" (25 mm) thru 2 5/8" (65 mm) and Tungsten Carbide plated Stainless Steel face in shaft sizes 2 3/4" (70 mm) thru 4 3/8" (110 mm).



PROBLEMS WITH CONVENTIONAL SEALS:

1. Trying to control start-up leakage with trial and error tightening of gland bolts.
2. Trying to align seal faces that you can't see, so that they won't cause the seal to move in operation and groove the shaft sleeve.

LEAKAGE OCCURS

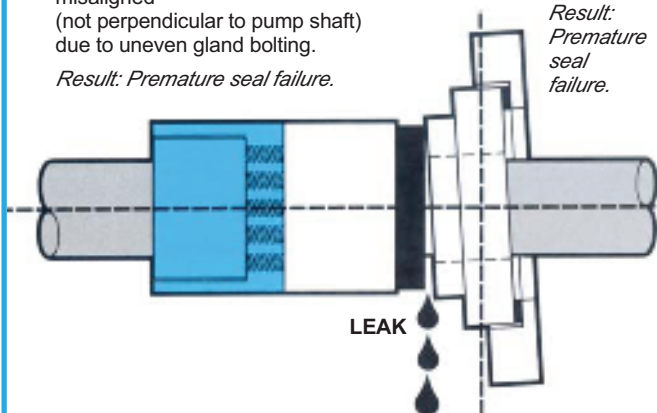
When stationary face is misaligned (not perpendicular to pump shaft) due to uneven gland bolting.

Result: Premature seal failure.

LEAKAGE OCCURS

When stuffing box face is misaligned (not perpendicular to pump shaft).

*Result:
Premature
seal
failure.*

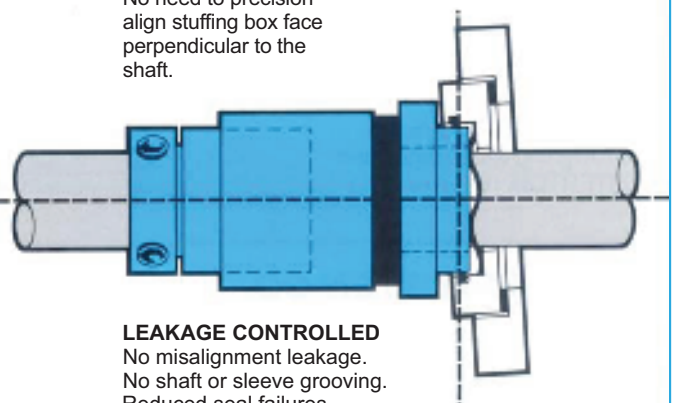


THE CHESTERTON SOLUTION:

***PATENTED DESIGN
SELF-ADJUSTS
TO CONTROL LEAKAGE***

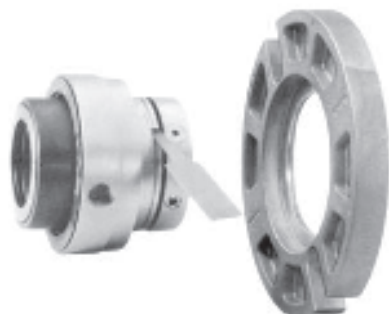
Stationary face flexes to set and lock faces in alignment.

No need to precision align stuffing box face perpendicular to the shaft.



LEAKAGE CONTROLLED
No misalignment leakage.
No shaft or sleeve grooving.
Reduced seal failures

CHESTERTON®
478 UNIVERSAL GLAND
Used with CHESTERTON
Seal Units for a complete
off-the-shelf installation



CHESTERTON
155 CARTRIDGE SEAL



CHESTERTON
880 OR 891 ROTARY WITH
CHESTERTON PATENTED
SELF-ALIGNING STATIONARY

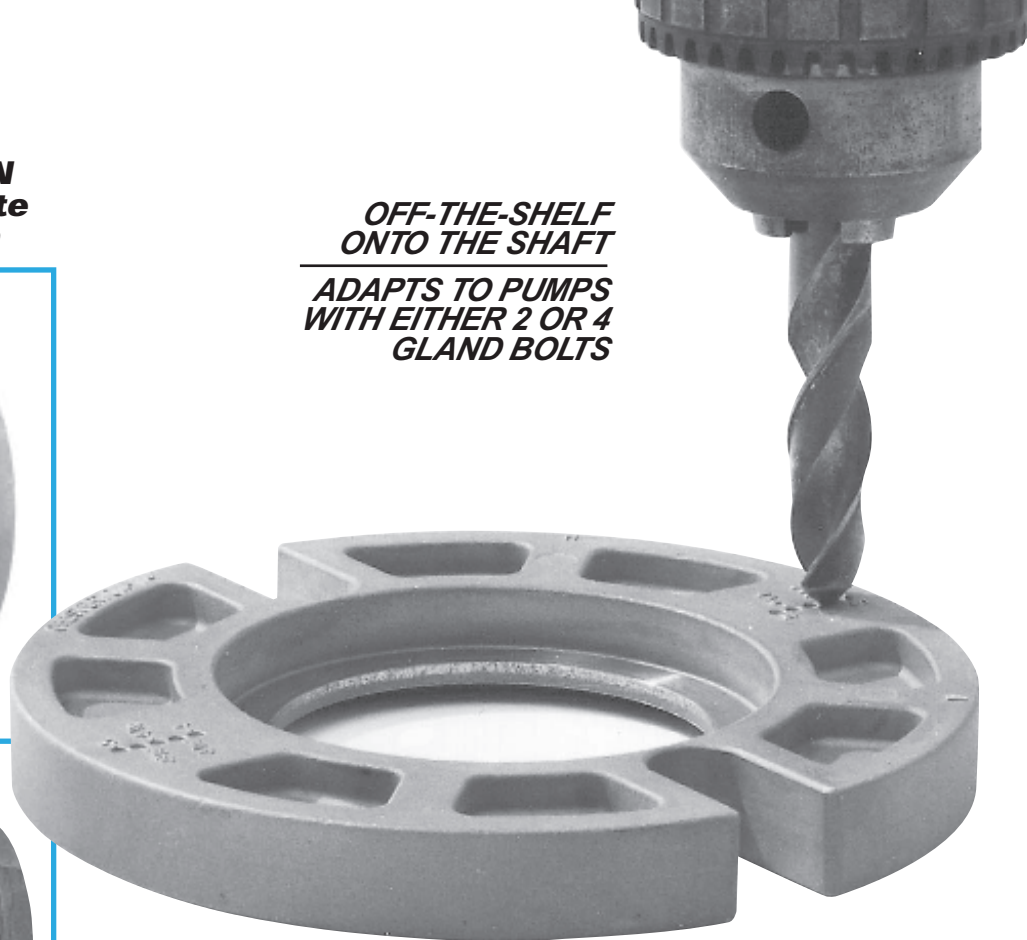


CHESTERTON
"L" SHAPED
STATIONARY

CHESTERTON
440 OUTSIDE
ROTARY

FITS all standard "L" Shaped
or Self-Aligning Stationaries and
CHESTERTON 155

**OFF-THE-SHELF
 ONTO THE SHAFT**
**ADAPTS TO PUMPS
 WITH EITHER 2 OR 4
 GLAND BOLTS**



Slots will fit all
popular gland bolt circles.

Two additional bolt
holes may be drilled using one
of the bolt circles cast into the gland.
Bolt hole size to be a minimum of
 $\frac{1}{16}$ " (1,5 mm) larger than the bolt diameter.
Bolt circles are cast into the gland in $\frac{1}{4}$ " (6,5 mm)
increments for positive hole positioning.

SHAFT SIZE		GLAND O.D.		MIN BOLT CIRCLE BY BOLT SIZE						FITS 155 SIZES	
INCH	MM	INCH	MM	$\frac{3}{8}$ "	10 mm	$\frac{1}{2}$ "	12 mm	$\frac{5}{8}$ "	16 mm	INCH	MM
1.000	24/25	4.11	105	2.88	74	—	—	—	—	—	—
1.125	28	4.24	108	2.89	74	—	—	—	—	1.000/1.125	25/28
1.250	30/32/33	4.36	111	3.13	80	—	—	—	—	—	30
1.375	35	4.49	114	3.20	82	—	—	—	—	1.250	32
1.500	38	4.99	127	3.51	90	—	—	—	—	1.375/1.500	35/38
1.625	40/42	4.99	127	3.50	90	3.62	92	—	—	1.625	40
1.750	43/45	5.49	140	3.72	95	3.85	98	—	—	1.750	45
1.875	48/50	5.49	140	3.88	100	4.01	102	—	—	1.875	50
2.000	53	5.99	152	4.14	106	4.26	108	—	—	2.000	—
2.125	55	5.99	152	4.39	112	4.52	115	4.64	118	—	—
2.250	—	6.24	—	4.52	—	4.64	—	4.77	—	2.125	55
2.375	60	6.24	159	4.55	116	4.67	119	4.80	122	2.250	—
2.500	—	6.49	—	4.78	—	4.90	—	5.03	—	2.375	60
2.625	65	6.49	165	4.90	125	5.03	128	5.15	131	2.500	—

Chesterton ISO certificates available on www.chesterton.com/corporate/iso



860 Salem Street
 Groveland, Massachusetts 01834 USA
 Telephone: (781) 438-7000 • Fax: (978) 469-6528
www.chesterton.com

© A.W. Chesterton Company, 2007. All rights reserved.
 ® Registered trademark owned and licensed by
 A.W. Chesterton Company in USA and other countries.

DISTRIBUTED BY:

FORM NO. 071260

PRINTED IN USA 4/07